

**KINGSTON UNIVERSITY STUDENT NUMBERS  
01 December 2010 Census - 2010/1 Academic Year**

The attached pages provide a summary profile of Kingston University's student population from the 01 December 2010 Census - the traditional Higher Education census date.

The Census data is extracted from the University Student Records System and corresponds to the HEFCE Higher Education Students' Early Statistics (HESES) Survey census date.

**Students excluded:** Students in Faculty of Health & Social Care Sciences, a joint faculty of Kingston University and St George's University of London (SGUL), who are registered students of SGUL; Dormant students; Research Students who are writing-up their thesis; Students studying for the whole of their programme overseas; Incoming exchange students; Affiliated students; Students who left the institution before 01 December 2010; Students who start in 2010/1 but after 01 December 2010.

From 2010/1 onward students finishing a spanning year of study (CS) are included in the population.

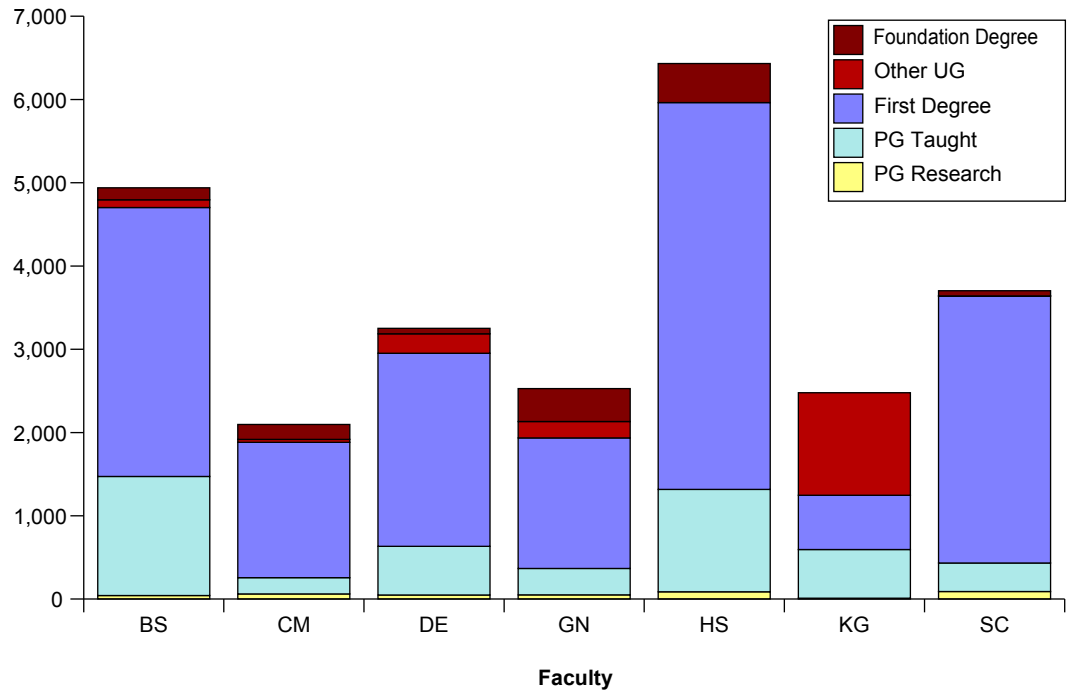
Page 2	Level & Mode by Faculty
Page 3	Summary Level & Mode; Gender by Faculty
Page 4	New Entrants by Level & Faculty
Page 5	Age on Entry
Page 6	Ethnicity
Page 7	Disability
Page 8/9	Fee Status
Page 10	Main University Sites
Page 11	UK Study Locations
Page 12	Geographical Area of Permanent Domicile
Page 13	Overseas Students Permanent Domicile

# Census Student Summary - Level & Mode by Faculty - 1st December 2010

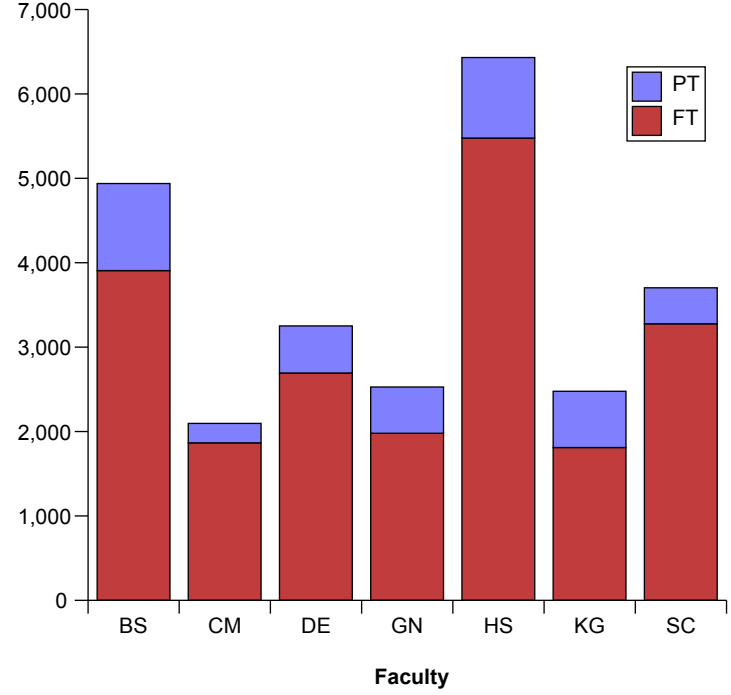
Faculty	Level of Study					Grand Total
	Foundation Degree	Other UG	First Degree	PG Taught	PG Research	
Art, Design & Architecture (DE)	66	233	2,320	584	49	3,252
Arts & Social Sciences (HS)	469	-	4,646	1,229	88	6,432
Business & Law (BS)	144	93	3,229	1,430	43	4,939
Comp, IS & Maths (CM)	179	36	1,625	196	61	2,097
Engineering (GN)	395	198	1,567	317	51	2,528
Health & Social Care Sciences (KG)	-	1,232	651	585	10	2,478
Science (SC)	63	1	3,207	343	90	3,704
<b>Grand Total</b>	<b>1,316</b>	<b>1,793</b>	<b>17,245</b>	<b>4,684</b>	<b>392</b>	<b>25,430</b>

Faculty	Mode		Grand Total
	FT	PT	
Art, Design & Architecture (DE)	2,694	558	3,252
Arts & Social Sciences (HS)	5,478	954	6,432
Business & Law (BS)	3,907	1,032	4,939
Comp, IS & Maths (CM)	1,867	230	2,097
Engineering (GN)	1,981	547	2,528
Health & Social Care Sciences (KG)	1,812	666	2,478
Science (SC)	3,278	426	3,704
<b>Grand Total</b>	<b>21,017</b>	<b>4,413</b>	<b>25,430</b>

**Student Numbers by Level**



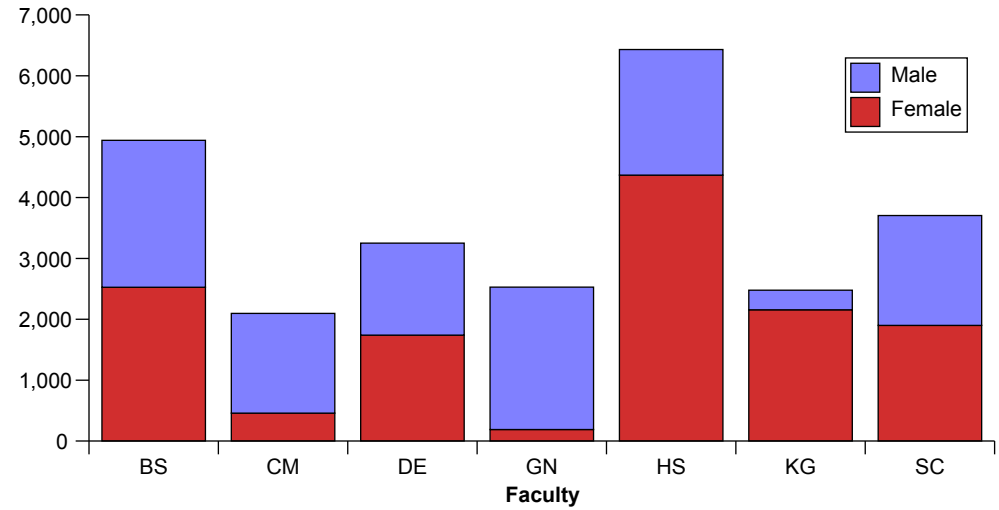
**Student Numbers by Mode**



# Census Student Summary - Gender, Level & Mode 1st December 2010

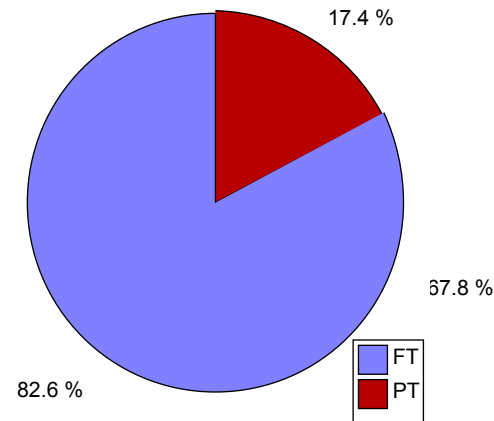
Gender			
Faculty	Female	Male	Grand Total
Art, Design & Architecture (DE)	1,740	1,512	3,252
Arts & Social Sciences (HS)	4,368	2,064	6,432
Business & Law (BS)	2,527	2,412	4,939
Comp, IS & Maths (CM)	459	1,638	2,097
Engineering (GN)	190	2,338	2,528
Health & Social Care Sciences (KG)	2,157	321	2,478
Science (SC)	1,901	1,803	3,704
<b>Grand Total</b>	<b>13,342</b>	<b>12,088</b>	<b>25,430</b>

### Student Numbers by Gender

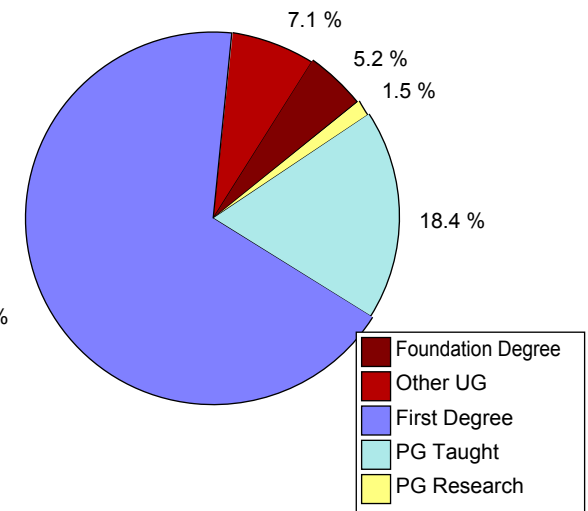


Mode			
Level	FT	PT	Grand Total
Foundation Degree	1,223	93	1,316
Other UG	1,726	67	1,793
First Degree	15,405	1,840	17,245
PG Taught	2,429	2,255	4,684
PG Research	234	158	392
<b>Grand Total</b>	<b>21,017</b>	<b>4,413</b>	<b>25,430</b>

### Student Numbers by Mode



### Student Numbers by Level

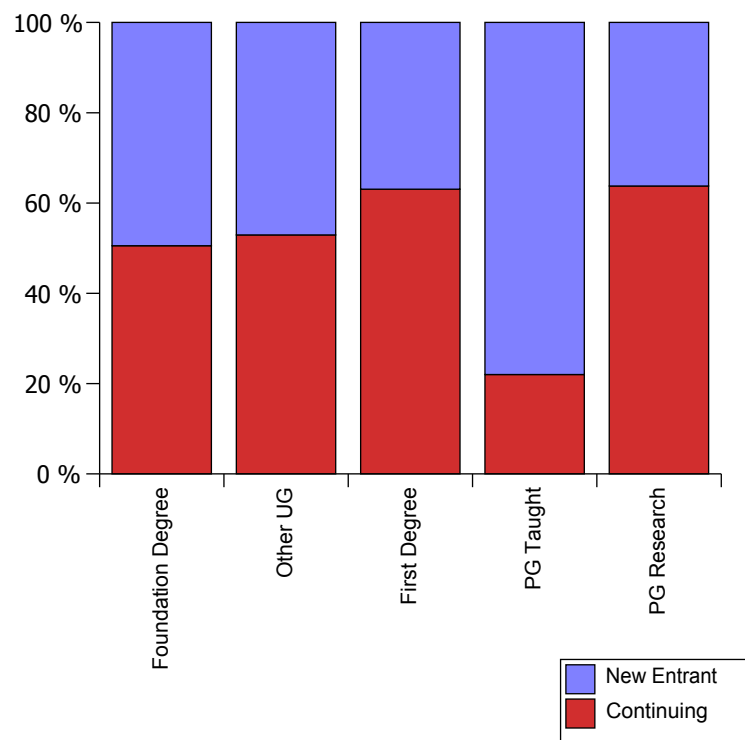


## Census Student Summary - New Entrants by Level & Faculty - 1st December 2010

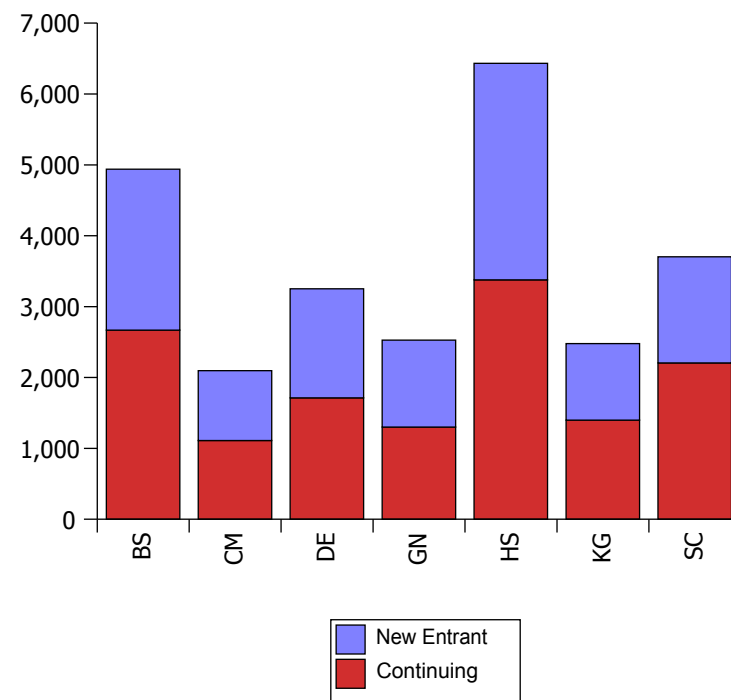
Faculty	Level of Study					Grand Total
	Foundation Degree	Other UG	First Degree	PG Taught	PG Research	
<b>Continuing</b>	665	949	10,878	1,031	250	<b>13,773</b>
<b>New Entrant</b>	651	844	6,367	3,653	142	<b>11,657</b>
<b>Grand Total</b>	<b>1,316</b>	<b>1,793</b>	<b>17,245</b>	<b>4,684</b>	<b>392</b>	<b>25,430</b>

Faculty	New Entrants		Grand Total
	Continuing	New Entrant	
<b>Art, Design &amp; Architecture (DE)</b>	1,712	1,540	<b>3,252</b>
<b>Arts &amp; Social Sciences (HS)</b>	3,377	3,055	<b>6,432</b>
<b>Business &amp; Law (BS)</b>	2,669	2,270	<b>4,939</b>
<b>Comp, IS &amp; Maths (CM)</b>	1,111	986	<b>2,097</b>
<b>Engineering (GN)</b>	1,301	1,227	<b>2,528</b>
<b>Health &amp; Social Care Sciences (KG)</b>	1,398	1,080	<b>2,478</b>
<b>Science (SC)</b>	2,205	1,499	<b>3,704</b>
<b>Grand Total</b>	<b>13,773</b>	<b>11,657</b>	<b>25,430</b>

### New Entrants by Level

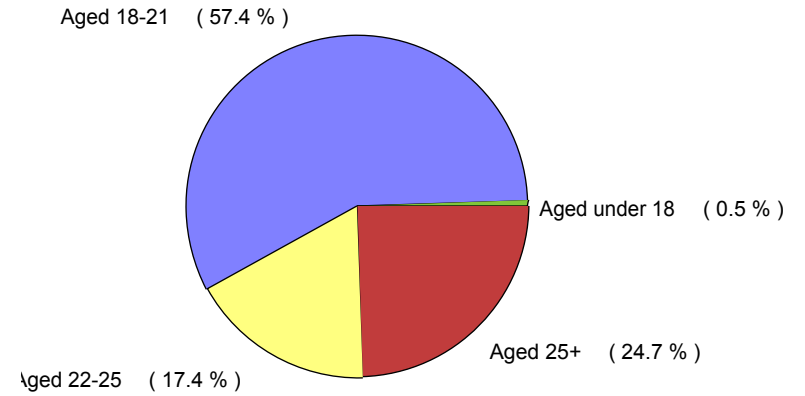


### New Entrants

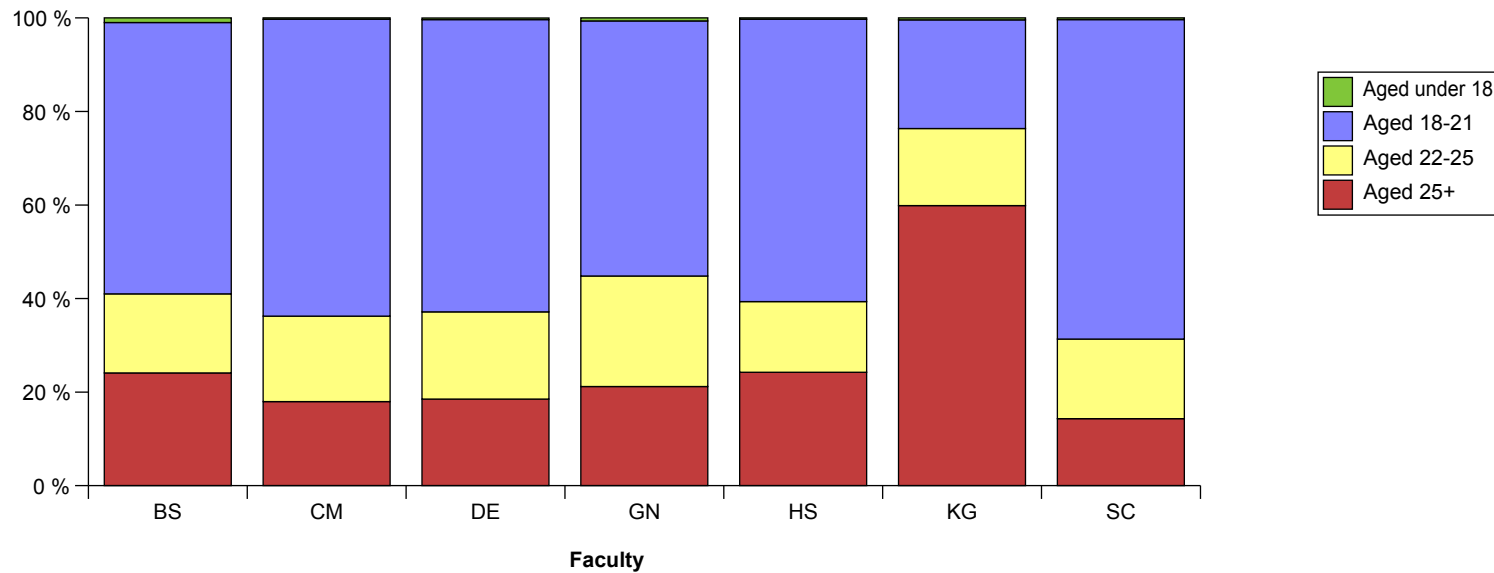


## Census Student Summary - Age on Entry Profile - 1st December 2010

Faculty	Age on Entry				Grand Total
	Aged under 18	Aged 18-21	Aged 22-25	Aged 25+	
Art, Design & Architecture (DE)	12	2,032	606	602	3,252
Arts & Social Sciences (HS)	19	3,882	972	1,559	6,432
Business & Law (BS)	49	2,865	835	1,190	4,939
Comp, IS & Maths (CM)	6	1,331	383	377	2,097
Engineering (GN)	16	1,379	597	536	2,528
Health & Social Care Sciences (KG)	10	576	408	1,484	2,478
Science (SC)	13	2,530	630	531	3,704
<b>Grand Total</b>	<b>125</b>	<b>14,595</b>	<b>4,431</b>	<b>6,279</b>	<b>25,430</b>



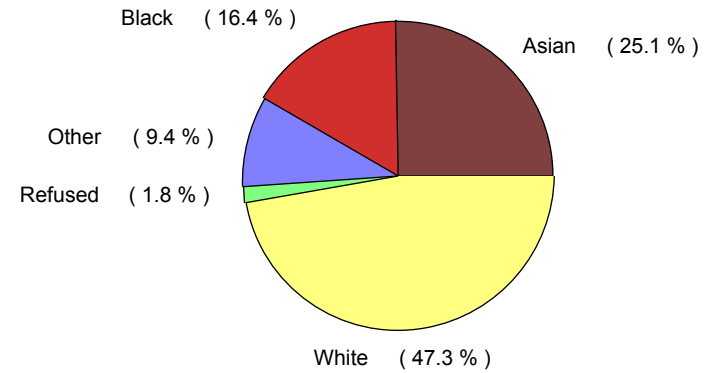
**Student Numbers by Age on Entry**



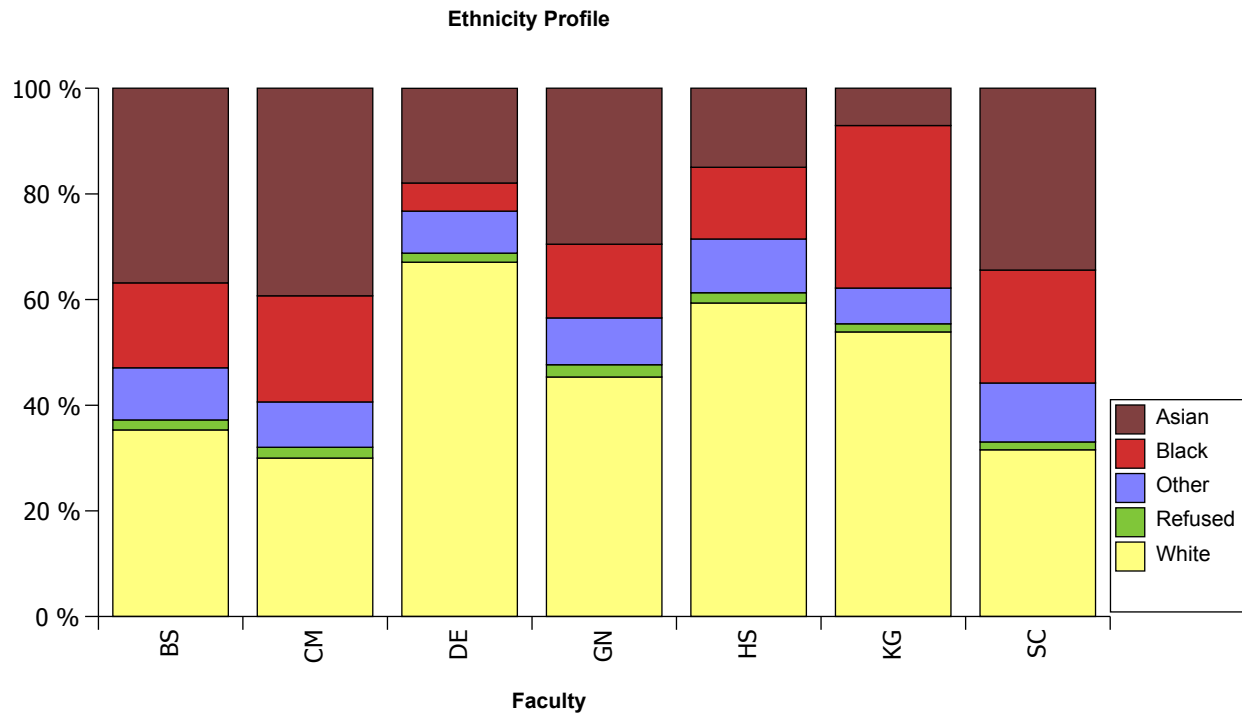
**Census Student Summary - Ethnicity Profile - 1st December 2010**

Faculty	Asian	Black	Other	Refused	White	Grand Total
Art, Design & Architecture (DE)	583	173	259	56	2,181	3,252
Arts & Social Sciences (HS)	962	873	655	124	3,818	6,432
Business & Law (BS)	1,819	795	487	93	1,745	4,939
Comp, IS & Maths (CM)	824	421	180	43	629	2,097
Engineering (GN)	746	353	224	59	1,146	2,528
Health & Social Care Sciences (KG)	175	762	168	38	1,335	2,478
Science (SC)	1,275	792	413	55	1,169	3,704
<b>Grand Total</b>	<b>6,384</b>	<b>4,169</b>	<b>2,386</b>	<b>468</b>	<b>12,023</b>	<b>25,430</b>

**Overall University Ethnicity Profile**



**Student Numbers by Ethnicity**

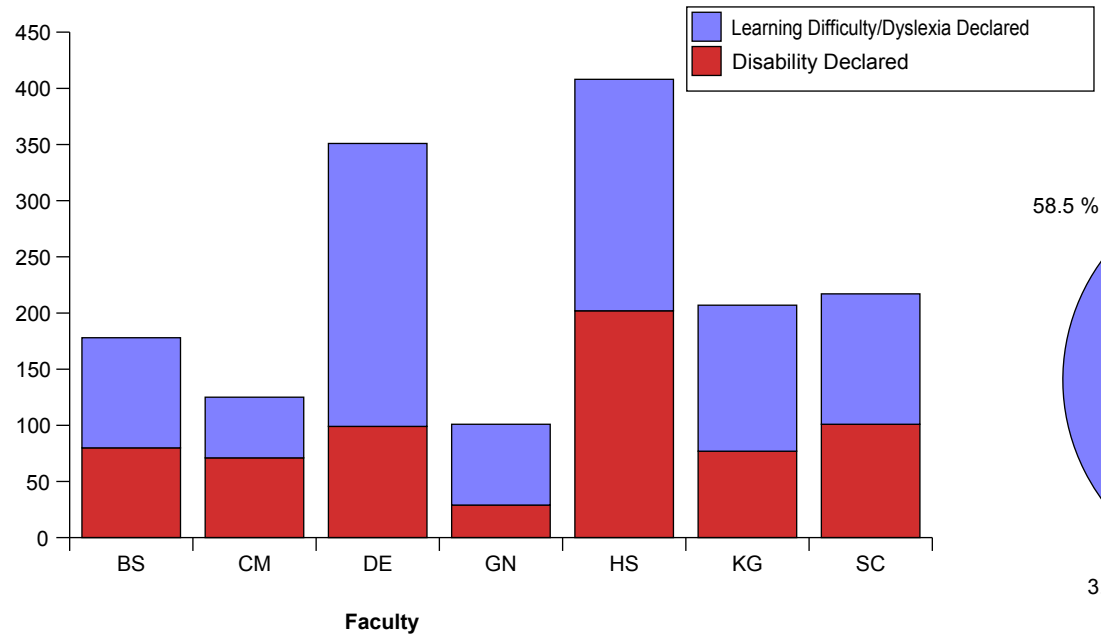


# Census Student Summary - Disability Profile - 1st December 2010

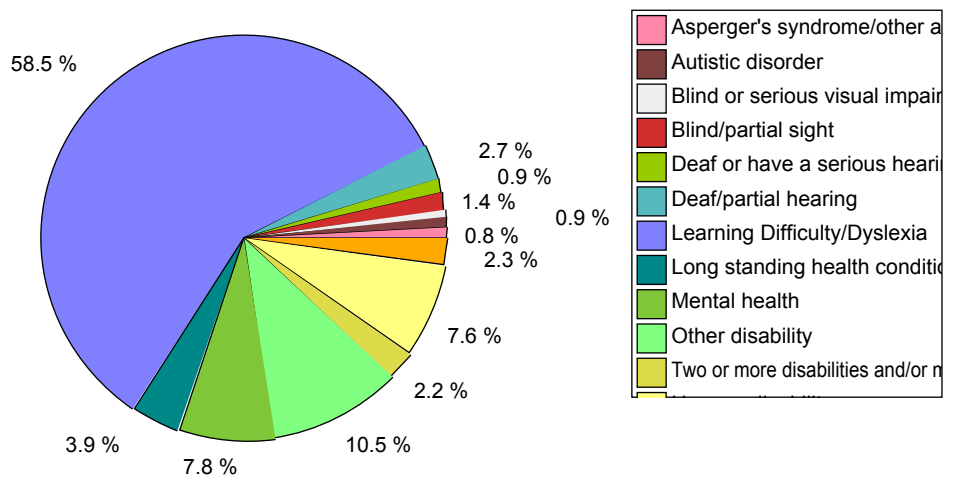
Disability Profile			
Faculty	Disability Declared	Learning Difficulty/Dyslexia Declared	Grand Total
Art, Design & Architecture (DE)	99	252	351
Arts & Social Sciences (HS)	202	206	408
Business & Law (BS)	80	98	178
Comp, IS & Maths (CM)	71	54	125
Engineering (GN)	29	72	101
Health & Social Care Sciences (KG)	77	130	207
Science (SC)	101	116	217
<b>Grand Total</b>	<b>659</b>	<b>928</b>	<b>1,587</b>

Disability Profile (declared only)	
Disability	Total
Asperger's syndrome/other a	12
Autistic disorder	14
Blind or serious visual impairment	9
Blind/partial sight	22
Deaf or have a serious hearin	15
Deaf/partial hearing	43
Learning Difficulty/Dyslexia	928
Long standing health conditio	62
Mental health	124
Other disability	166
Two or more disabilities and/	35
Unseen disability	120
Wheelchair/mobility	37
<b>Grand Total</b>	<b>1,587</b>

**Student Numbers - Declared Disabilities**



**Declared Disabilities Proportion**



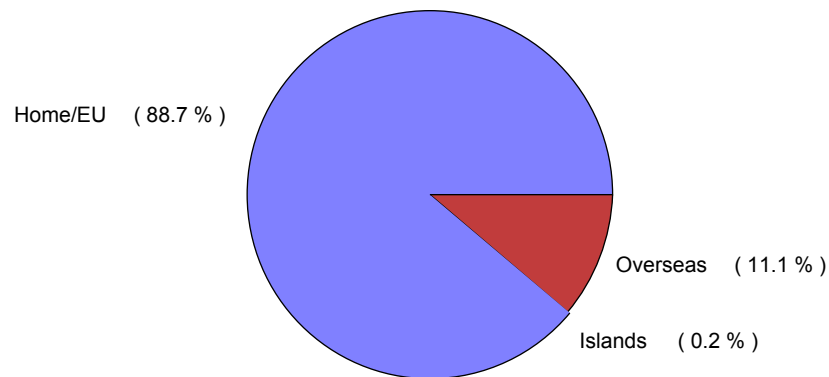
# Census Student Summary - Fee Status Profile - 1st December 2010

**Fee Status\***

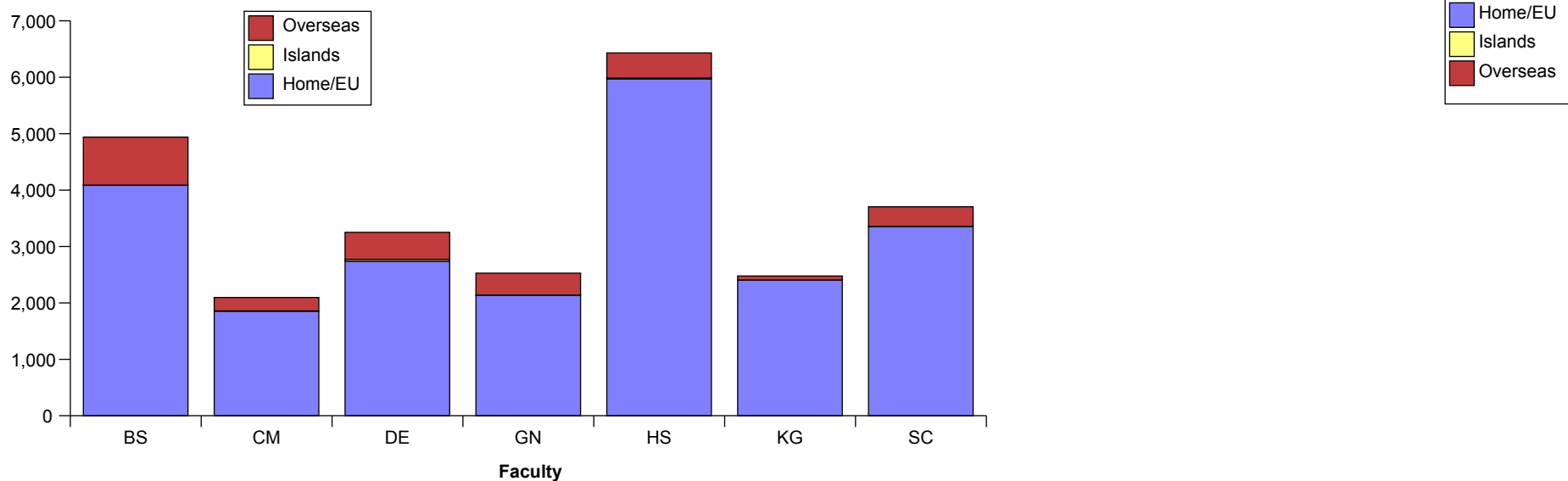
Faculty	Home/EU	Islands	Overseas	Grand Total
Art, Design & Architecture (DE)	2,739	34	479	3,252
Arts & Social Sciences (HS)	5,973	14	445	6,432
Business & Law (BS)	4,085	2	852	4,939
Comp, IS & Maths (CM)	1,855	3	239	2,097
Engineering (GN)	2,136	2	390	2,528
Health & Social Care Sciences (KG)	2,406	-	72	2,478
Science (SC)	3,353	4	347	3,704
<b>Grand Total</b>	<b>22,547</b>	<b>59</b>	<b>2,824</b>	<b>25,430</b>

\* ELQ Students grouped within Home/EU

### Student Numbers by Fee Status



### Student Numbers by Fee Status and Faculty





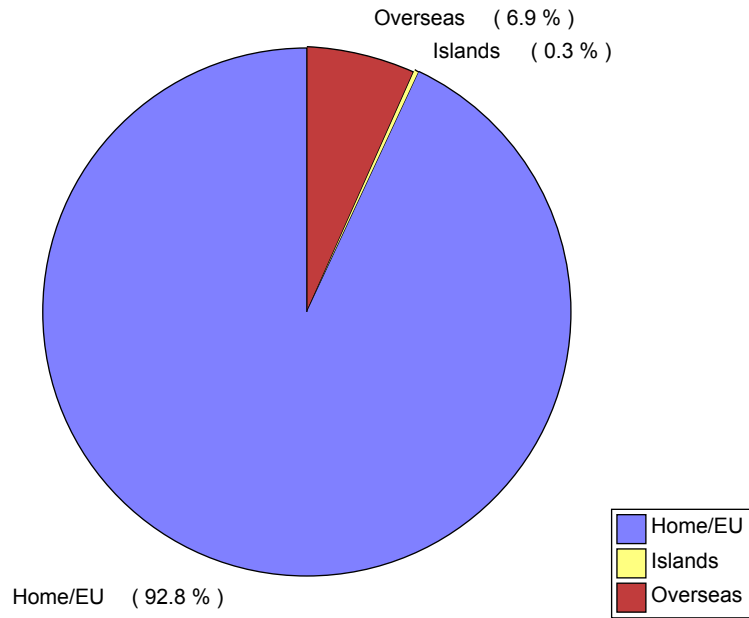
# Census Student Summary - Fee Status by Level Summary - 1st December 2010

Fee Status*				
Level	Home/EU	Islands	Overseas	Grand Total
UG	18,898	58	1,398	20,354
PG	3,649	1	1,426	5,076
<b>Grand Total</b>	<b>22,547</b>	<b>59</b>	<b>2,824</b>	<b>25,430</b>

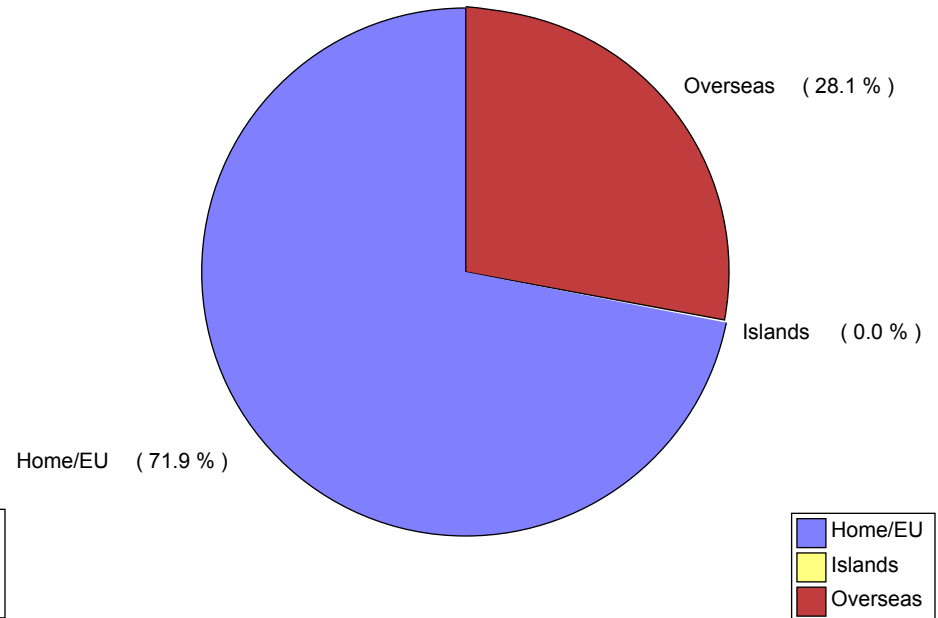
\* ELQ Students grouped within Home/EU

Level		Home/EU	Islands	Overseas	Grand Total
UG	New Entrant	7,355	24	483	7,862
UG	Continuing	11,543	34	915	12,492
PG	New Entrant	2,574	1	1,220	3,795
PG	Continuing	1,075	-	206	1,281
<b>Grand Total</b>		<b>22,547</b>	<b>59</b>	<b>2,824</b>	<b>25,430</b>

### Undergraduate Fee Status



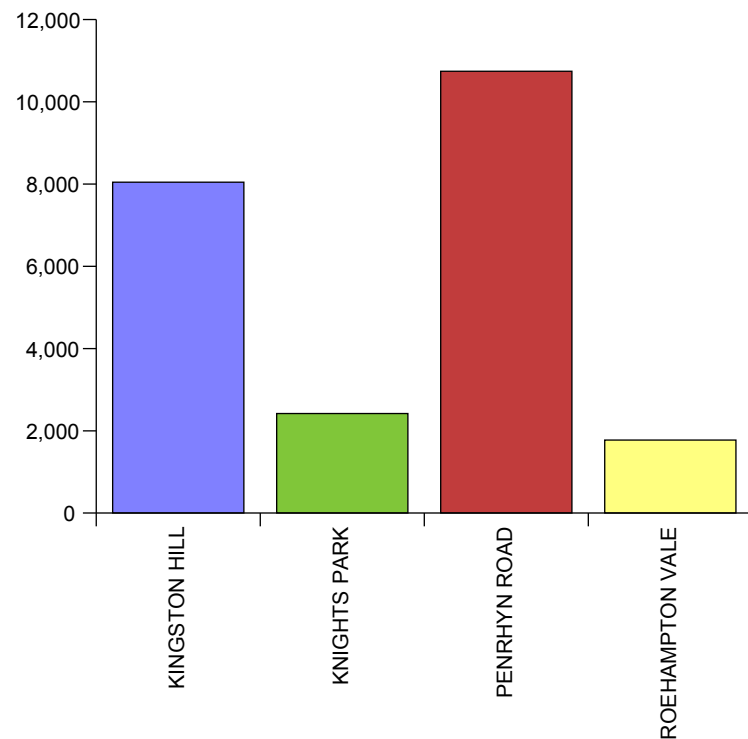
### Postgraduate Fee Status



## Census Student Summary - University Main Sites - 1st December 2010

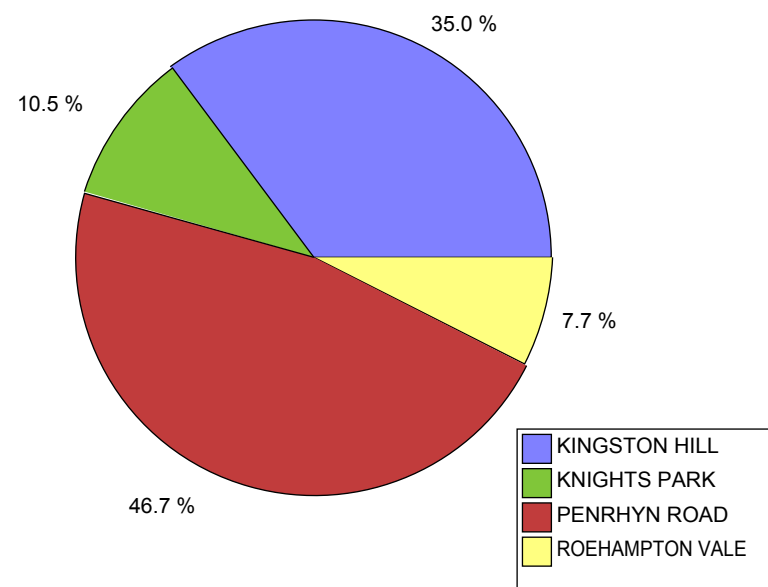
University Site	Grand Total
KINGSTON HILL	8,047
KNIGHTS PARK	2,421
PENRHYN ROAD	10,742
ROEHAMPTON VALE	1,774
<b>Grand Total</b>	<b>22,984</b>

**Student Numbers by Site**



Faculty	Kingston College	Other UK	University Sites	Grand Total
Art, Design & Architecture (DE)	18	88	3,146	3,252
Arts & Social Sciences (HS)	156	389	5,887	6,432
Business & Law (BS)	297	413	4,229	4,939
Comp, IS & Maths (CM)	150	132	1,815	2,097
Engineering (GN)	30	542	1,956	2,528
Health & Social Care Sciences (KG)	-	-	2,478	2,478
Science (SC)	191	40	3,473	3,704
<b>Grand Total</b>	<b>842</b>	<b>1,604</b>	<b>22,984</b>	<b>25,430</b>

**Student Numbers - Site Proportion**



**Census Student Summary - UK Locations - 1st December 2010**

	Kingston College	Other UK	University Sites	Grand Total
Aborfield	-	12	-	12
British Airways (Heathrow Airport)	-	17	-	17
BROOKLANDS COLLEGE	-	38	-	38
Building Crafts College	-	18	-	18
Capita (London)	-	15	-	15
CITY OF BRISTOL COLLEGE	-	25	-	25
DELPHI DIESEL	-	1	-	1
DESIGN MUSEUM LONDON	-	40	-	40
EASTWOOD PARK	-	53	-	53
European Pilot Training Academy	-	41	-	41
Exeter College	-	22	-	22
HMS Sultan	-	194	-	194
HOUNSLOW TEACHERS CENTRE	-	5	-	5
KINGSTON COLLEGE	842	-	-	842
KINGSTON HILL	-	-	8,047	8,047
KNELLER HALL (ROYAL MILITARY SCHOOL	-	8	-	8
KNIGHTS PARK	-	-	2,421	2,421
MARSHALLS AEROSPACE CAMBRIDGE	-	47	-	47
NESCOT	-	36	-	36
NEWCASTLE	-	96	-	96
NEWTEC	-	67	-	67
NORWICH (KLM)	-	82	-	82
PENRHYN ROAD	-	-	10,742	10,742
RICHMOND ADULT & COMMUNITY COLLEGE	-	23	-	23
RICHMOND COLLEGE	-	237	-	237
ROEHAMPTON VALE	-	-	1,774	1,774
SOUTH THAMES (MERTON CAMPUS)	-	87	-	87
SOUTH THAMES (WANDSWORTH CAMPUS)	-	105	-	105
SPELTHORNE COLLEGE	-	10	-	10
SRI-LANKA	-	5	-	5
SURREY TEACHERS CENTRE	-	37	-	37
SVKM Mumbai	-	81	-	81
VEOLIA - Staines	-	55	-	55
WEST THAMES COLLEGE	-	76	-	76
WHITEFIELDS SCHOOL	-	71	-	71
	842	1,604	22,984	25,430

## Census Student Summary - Geographical Area of Domicile - 1st December 2010

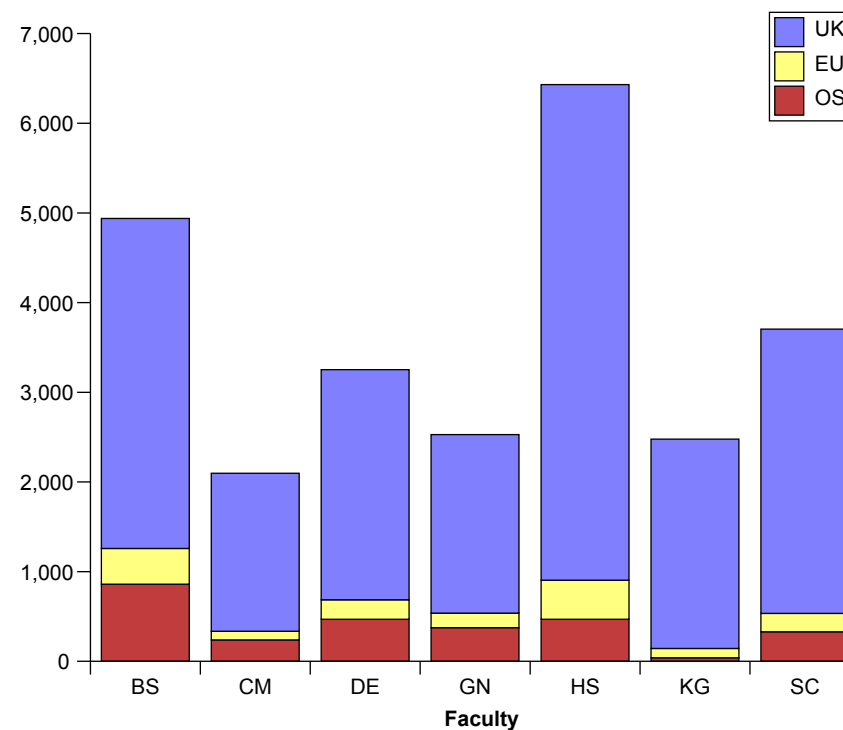
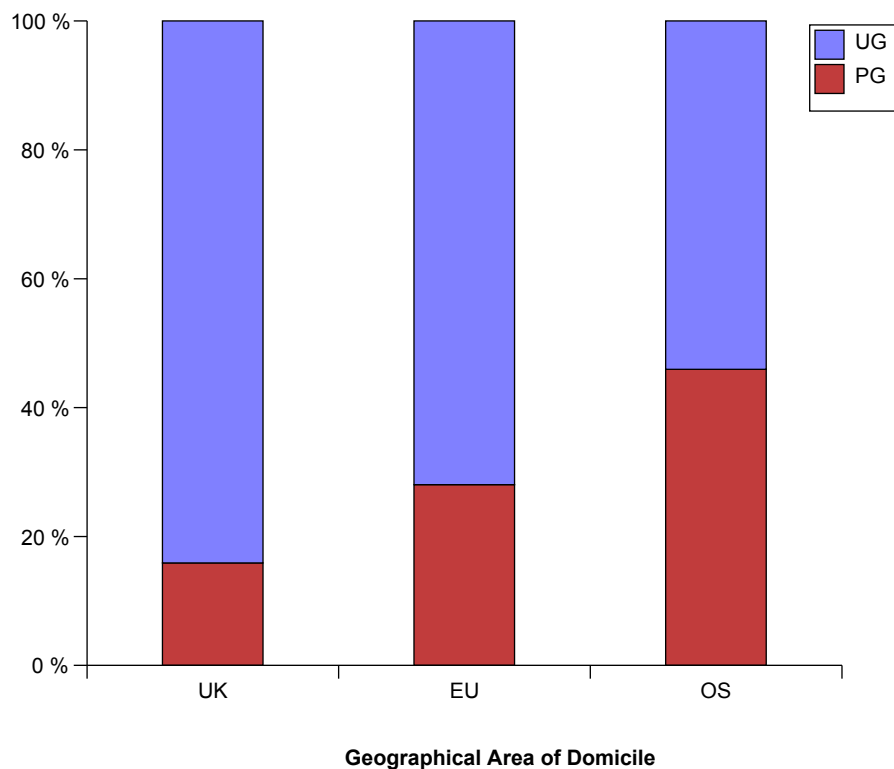
**Geographical Area of Domicile**

Level	UK	EU	OS	Grand Total
<b>PG</b>	3,345	454	1,277	<b>5,076</b>
<b>UG</b>	17,686	1,165	1,503	<b>20,354</b>
<b>Grand Total</b>	<b>21,031</b>	<b>1,619</b>	<b>2,780</b>	<b>25,430</b>

**Geographical Area of Domicile**

Faculty	UK	EU	OS	Grand Total
<b>Art, Design &amp; Architecture (DE)</b>	2,566	217	469	<b>3,252</b>
<b>Arts &amp; Social Sciences (HS)</b>	5,528	435	469	<b>6,432</b>
<b>Business &amp; Law (BS)</b>	3,681	398	860	<b>4,939</b>
<b>Comp, IS &amp; Maths (CM)</b>	1,762	97	238	<b>2,097</b>
<b>Engineering (GN)</b>	1,991	162	375	<b>2,528</b>
<b>Health &amp; Social Care Sciences (KG)</b>	2,334	104	40	<b>2,478</b>
<b>Science (SC)</b>	3,169	206	329	<b>3,704</b>
<b>Grand Total</b>	<b>21,031</b>	<b>1,619</b>	<b>2,780</b>	<b>25,430</b>

**Student Numbers by Geographical Area of Domicile**



## Census Student Summary - Non-UK Domiciles - 1st December 2010

India	515	Malta	18	Trinidad and Tobago	5
Greece	256	Qatar	18	Barbados	4
Cyprus (European Union)	190	Belgium	17	Guyana	4
Ireland	186	Hungary	17	Kosovo	4
Norway	182	Vietnam	17	Serbia	4
China	169	Zimbabwe	16	Tunisia	4
Germany	142	Kenya	15	Turks and Caicos Islands	4
United States of America	138	Lebanon	15	Ukraine	4
Korea (South)	133	Slovakia	15	Venezuela	4
Nigeria	124	Uganda	15	Zambia	4
Sri Lanka	111	Afghanistan	14	Azerbaijan	3
Iran	102	Brazil	14	Botswana	3
Italy	94	Indonesia	14	Cyprus (Non-European Union)	3
Pakistan	91	South Africa	14	Ecuador	3
Hong Kong	85	Czech Republic	12	Ethiopia	3
Bulgaria	82	Estonia	12	Grenada	3
France	76	Kazakhstan	12	Macao	3
Saudi Arabia	72	Albania	11	Mongolia	3
Poland	70	Egypt	11	Montserrat	3
Spain	66	Kuwait	11	Antigua and Barbuda	2
United Arab Emirates	66	Luxembourg	10	Cayman Islands	2
Thailand	59	British Virgin Islands	9	Eritrea	2
Turkey	58	Iraq	9	Georgia	2
Romania	56	Maldives Islands	9	Iceland	2
Sweden	50	Oman	9	Israel	2
Lithuania	48	Singapore	9	Malawi	2
Portugal	48	Australia	8	Moldova	2
Mauritius	44	Somalia	8	Montenegro	2
Canada	42	Angola	7	Namibia	2
Taiwan	39	Belarus	7	New Zealand	2
Netherlands	38	Brunei	7	Not Known	2
Jordan	37	Burma	7	Senegal	2
Malaysia	37	Mexico	7	St Vincent	2
Russia	37	Tanzania	7	Sudan	2
Japan	32	Cameroon	6	Turkmenistan	2
Gibraltar	30	Colombia	6	Anguilla	1
Austria	29	Jamaica	6	Argentina	1
Bangladesh	25	Sierra Leone	6	Armenia	1
Latvia	25	Syria	6	Asia (Except Middle East), not otherwise specified	1
Bermuda	24	Algeria	5	Bahamas	1
Nepal	23	Bahrain	5	Benin	1
Switzerland	22	Croatia	5	Bolivia	1
Denmark	20	Libyan AR	5	British Antarctic Territory	1
Finland	18	Morocco	5	Burundi	1
Ghana	18	Philippines	5	Chile	1

**Census Student Summary - Non-UK Domiciles - 1st December 2010**

Djibouti	1
Dominica	1
Equatorial Guinea	1
European Union, not otherwise specified	1
Falkland Islands	1
Kyrgyzstan	1
Lesotho	1
Macedonia	1
Madagascar	1
Netherlands Antilles	1
Niue	1
Palestine	1
Papua New Guinea	1
Peru	1
Seychelles	1
Slovenia	1
St Lucia	1
Uzbekistan	1
Yemen	1
<b>Grand Total</b>	<b>4,399</b>